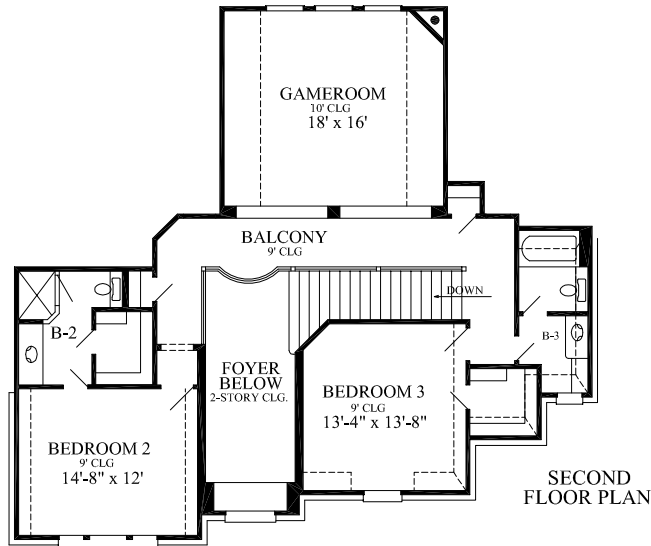
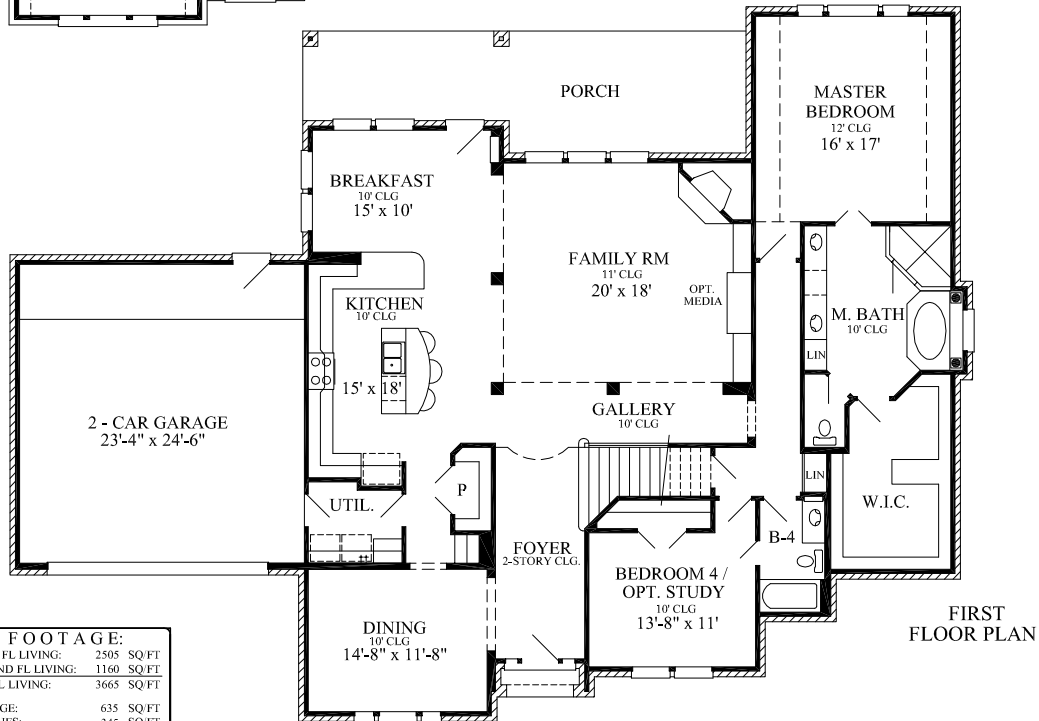




FRONT ELEVATION - PLAN: 3665



SECOND FLOOR PLAN



FIRST FLOOR PLAN

FOOTAGE:	
FIRST FL LIVING:	2505 SQ FT
SECOND FL LIVING:	1160 SQ FT
TOTAL LIVING:	3665 SQ FT
GARAGE:	635 SQ FT
PORCHES:	345 SQ FT
TOTAL SLAB:	3485 SQ FT
TOTAL COVERED:	4645 SQ FT

Architectural dimensions shown are nominal exterior dimensions, room sizes, window placements and other dimensions may vary from these drawings. This brochure is for illustration purposes only. They are not part of a legal contract. Bilmar Homes reserves the right to change product, features, brand names, architectural design and details without notice.

WIDTH: 77'-11"
DEPTH: 58'-7"

